



StepTrone Automation
"Step To Electromation"

📍 C1B/883/4, G.I.D.C. MAKARPURA INDUSTRIAL ESTATE,
MAKARPURA, VADODARA - 390010.

☎ +91 76987 61007 , 81280 29210

✉ steptrone@gmail.com

🌐 www.steptrone.com



Preface:- In pursuit of Excellence

Every single pursuit towards excellence has its roots firmly set in the courage to dream and having single minded focus to fulfill them

About Us

Steptrone Automation started it's journey on a humble note in 2017 to supply quality automation parts & instrumentation services and total solutions to customers.

Reliable and Trusted Business Partner:-

We started this venture with a team of experts in rendering automation solutions. Over the years we established a strong foothold in Gujarat's competitive market. We built our reputation steadily not just as a component supplier but as a reliable and trusted business partner.

In our journey, we developed special relationships with our clients by solving their practical problems and giving them unmatched support in terms of timely availability of spares and repair and maintenance services.

Our Solution Partners



We also Deals in below mention Products and Brands:-

Rockwell, Allen Bradly, Belden Cables, Omron, Selec, Autonics, C&S, Elmex Terminal and We supply Panel Accessories as per customer requirement.

Mitsubishi: Industrial Automation Product HMI , PLC , SCADA Software, Servo-System, AC Drives, Switchgear- MCB's, Contactors, Limit Switch, MCCB's, MPCB's etc.

L&T : AC Drives, Switchgear- MCB's, Contactors, Limit Switch, MCCB's, MPCB's etc , Push Buttons, Selector switch etc and EMS

P&F Sensors: Pioneers in the industry, we offer photoelectric sensors, inductive proximity sensors, capacitive proximity sensor and ultrasonic sensors from India.

Panel Enclosure. : Rittal Make Enclosure

Our Vision and Mission

The aim is to once again set the yardstick of quality, highest customer satisfaction and integrity through ingenious product solutions

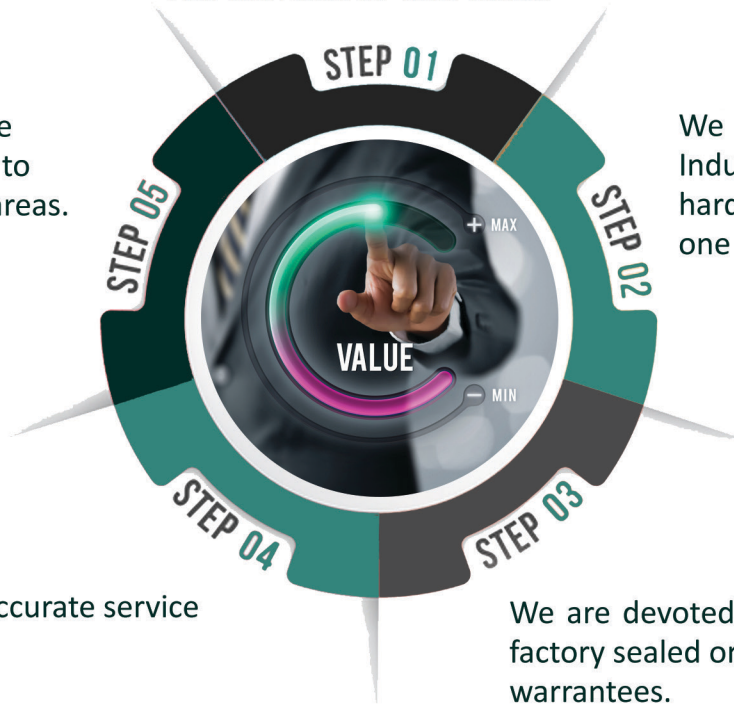
Our Value propositions/ What distinguishes us?

We offer a bunch of values that add to the success of your business and are synonymous with availability of parts, timely response and efficient customer care.

We maintain the biggest inventory of products and spares (even for some outdated products) so that you can enjoy zero risk with shorter lead times.

We have deep in-house expertise and are able to consult you in critical areas.

We have the widest range of Industrial Automation hardware and software under one roof.



Quick and accurate service

We are devoted to quality brand new factory sealed original parts with warranties.

"We are committed to deep service quality"



Our People

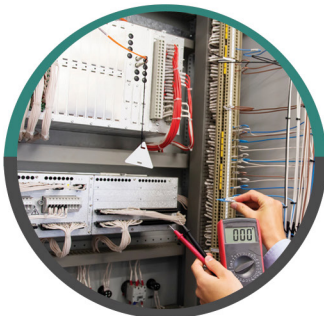
With a deep rooted dynamism and dedication toward achieving the goal. Steprone Automation consists of a team of experienced, astute and technically expert members and partners who are holding the bastion of excellence with their shared focused energy helping the group finding its firm presence in the industry.





Our Services

The aim is to once again set the yardstick of quality, highest customer satisfaction and integrity through ingenious product solutions



Panel Building



Plant Automation



Cable Laying



Panel Installation
& Commissioning



Machine Automation



Process Automation

VFD Repairing: We also have in House Lab Facilities for all makes of VFD Repairing through our highly Qualified & Experience Engineers.

We Service & Repair in Brands ABB, Mitsubishi, Schneider, Delta etc.

We are the Stockiest of Listed Products

AC Drives

ABB



- ✓ ACS 560 General Purpose Drive
- ✓ ACS 355 Machinery Drives
- ✓ ACS 580 / ACS 880 Industrial Drives
- ✓ ACS 310 Micro Drives

Schneider Electric

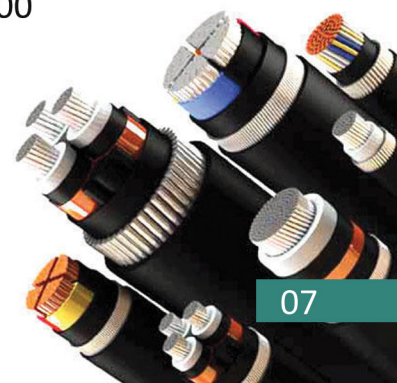


- ✓ Altivar 12
- ✓ Altivar 310
- ✓ Altivar 320
- ✓ Altivar 340
- ✓ Altivar 630/650
- ✓ Altivar 930
- ✓ Altivar 950

Danfoss



- ✓ DANFOSS FC 360 VLT Automation Drive
- ✓ VLT® Micro Drive
- ✓ VLT® HVAC Drive FC 100
- ✓ VLT® Automation Drive FC 300



PLCs

- ✓ PLC
- ✓ Digital Input Modules
- ✓ Digital Output Modules
- ✓ Analog Input Modules
- ✓ Analog Output Modules



HMI

- ✓ 4.3 inch
- ✓ 7 inch
- ✓ 10 inch
- ✓ 12 inch
- ✓ 15.6 inch
- ✓ 18.5 inch
- ✓ 21.5 inch



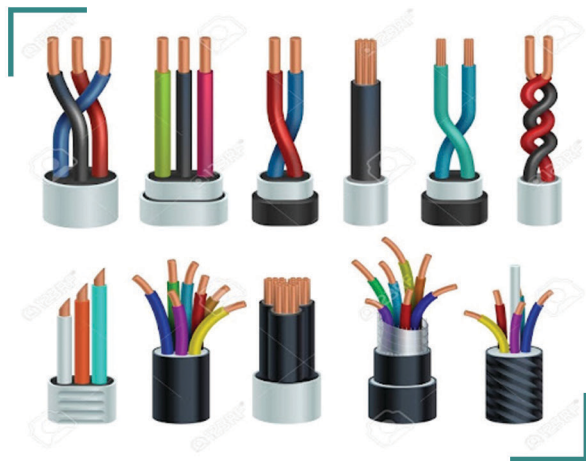
CONTROLLERS

- ✓ Counters
- ✓ Timers
- ✓ Temperature Controller
- ✓ Energy Meter
- ✓ Hour Meter
- ✓ Alarm Annunciators



SWITCHGEARS

- ✓ Air Circuit breaker
- ✓ Miniature circuit breakers (MCB)
- ✓ Molded case circuit breakers (MCCB)
- ✓ Motor protection circuit breakers (MPCB)
- ✓ Contactors
- ✓ Push Buttons
- ✓ Indication Lamp



CABLES

- ✓ Panel Wires
- ✓ Multicore Cables
- ✓ Power & Control Cables
- ✓ Solar Cables
- ✓ Instrumentation Cable
- ✓ Telecom Cables
- ✓ Welding Cable



SMPS

- ✓ 12 VDC SMPS
- ✓ 24 VDC SMPS
- ✓ DC to DC / AC to DC SMPS
- ✓ 3 Phase SMPS



Our Manufacturing Division

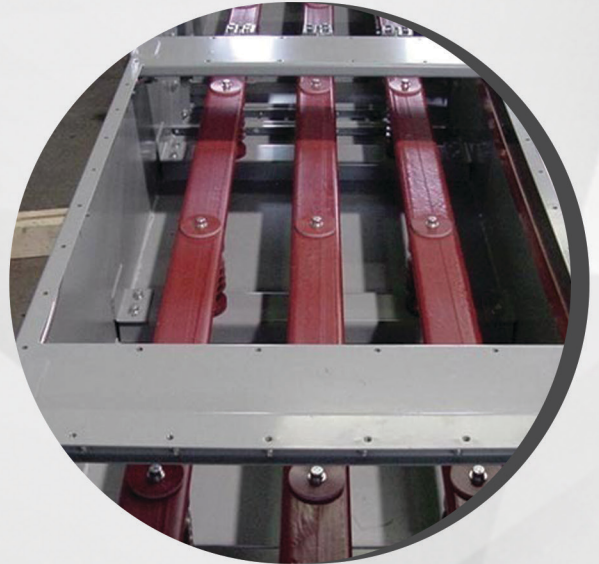
PCC Panel



- 4000 Amp ACB Panel Draw-Out & Non Draw Out type (Extendable)
- Demand Controller features all basic parameters with Act demand and set Demand, Harmonics Graph, Data Logging, to PCs. etc
- With Mechanical or Electrical Interlocks with DG Incomer as needed

Bus Duct

- Bus Ducts and Rising Mains are offered up to 4000 A with less than 35 Degree Celsius



IMCC Panel



- IMCC / MCC (Intelligent Motor Control Center) 800 Amps, Both Single and Double Front, L-Type, C- or U- Type Panels with successful and impressive response from the Customers for the design, operation and service of the Panels.

APFC Panel



- Automatic power factor correction Panel up to 600 KVR, with Thyristor based 7-14% detuned filter application Reactor, Harmonics reduction applications with performance of maintaining 0.99 to 1.0 power factor using all types of Capacitor Banks CAN Type, BOX type, APP Heavy Duty type.

PLC & VFD Panel

- PLC & VFD Control Panels for Automated Sequencing & cut offs of in Heat Ventilation & Air Conditioning (HAVC) Panels.



Feeder Pillar Panel

- Feeder Pillars Manufactured by us are Designed for Outdoor applications. The most major application is for Outdoor Lighting & Power Distribution in Residential Colonies. Our feeder Pillars are designed to protect the Electrical Equipments fitted inside from Dust & Rain water. Feeder Pillar are provided with rain canopy.



Our Valuable Clients

Our ever growing client list says it all for us!



StepTrone Automation

"Step To Electromation"

📍 C1B/883/4, G.I.D.C. MAKARPURA INDUSTRIAL ESTATE,
MAKARPURA, VADODARA - 390010.

☎ +91 76987 61007 , 81280 29210

✉ steptrone@gmail.com

🌐 www.steptrone.com